



MEETING: RHPP Directors, Regional Center Directors  
 DATE: August 17, 2022  
 TIME: 12:00-12:48pm  
 PLACE: AHEC Zoom Meeting  
 HOST: Leila Barraza  
 RHPP Director Attendees: Andrea Lerner, Bettie Coplan, Jonathan Cartsonis, Marc Verhougstraete, Carlos Gonzales and Anna Landau  
 Center Director Attendees: Felipe Perez, Joena Ezroj, Marica Martinic  
 Other Attendees: Jennifer Zuniga, Amanda Perkins, Colleen Reed, Nicole Paredes, Marni Valenzuela, Sonia Cota-Robles, Edgardo Figueroa, Becca Harris, Mallika Peddada

ITEM	ANNOUNCEMENT/DISCUSSION	Information provided by:
<b>Meeting</b>	Welcome	Leila Barraza
<b>Discussion</b>	<p>HRSA Performance Report was submitted for 2022. The report was approximately 400 pages. Interested parties can view the template with required metrics at: <a href="https://bhw.hrsa.gov/sites/default/files/bureau-health-workforce/funding/final-report-for-grants.pdf">https://bhw.hrsa.gov/sites/default/files/bureau-health-workforce/funding/final-report-for-grants.pdf</a>. Changes in reporting requirements are being reflected in Salesforce and training has begun with the Centers.</p> <p>RHPP 2022-23 budget requests have been received from most programs and are in the final stages. Student support in 2021-22 was an average of 59% of budgets for all RHPPs.</p> <p>Notice of Award from HRSA for the next five years has been received. Program Office is assessing the award level and will be arranging meetings to discuss the Center Scope of Work. As anticipated when the application opportunity was received and discussed with the centers beginning in March, the following reflects changes in the new federal award from the prior award: CBET efforts remain unchanged, AHEC Scholar efforts increase to meet HRSA reportable immersion hours, Club efforts <u>decrease by 40%</u>, Other pipeline efforts <u>are eliminated</u>, Continuing education efforts <u>decrease by 25%</u>. Page 5 and 6 of the attached previously distributed to centers detail these these changes. Centers are strongly encouraged to work within their own organizations to implement these changes of focus as they develop budgets. Specific budget questions may be addressed with Amanda Perkins, <a href="mailto:alperkin@arizona.edu">alperkin@arizona.edu</a>.</p> <p>AHEC Scholars 2022-24 recruitment continues by the RHPPs and through Salesforce interface. 2022-24 Scholars have been projected thus far by RHPPs at approximately the same level as the 2021-23 Scholar participation. We've received 61 new applications as of this meeting, and have 102 returning 21-23 cohort participants which includes 13 scholars from the undergraduate program. A summary count of 22-24 scholar applications and returning 21-23 scholars is attached to these meeting notes. Achievement of the projected level assures achievement of HRSA requirements. The August 16 ASP Mentor Orientation meeting recording will be distributed shortly. Regional placements for scholars will be distributed early September.</p> <p>Contract with American Indian Health AHEC was signed the week of August 8. Implementation meetings began in July and will continue with the new regional</p>	<p>Leila Barraza</p> <p>Leila Barraza</p> <p>Leila Barraza Jennifer Zuniga Amanda Perkins</p> <p>Nicole Paredes</p> <p>Leila Barraza</p>



	<p>center. Center is currently collaborating with San Carlos and Gila River tribal communities with plans of serving more communities in the future as may be identified in their strategic plan.</p>	
--	---	--

ASP Applications as of 8/17/22 11:30am		
Row Labels	Count of Application Status	Projected
<b>ASU College of Nursing and Health Innovation</b>	<b>15</b>	
Accepted	13	15
On-Hold	1	
Submitted	1	
<b>NAU Physical Therapy</b>	<b>5</b>	
Accepted	1	5
Submitted	4	
<b>NAU Physician Assistant Studies</b>	<b>29</b>	
Accepted	29	29
<b>NAU School of Nursing</b>	<b>8</b>	
Accepted	7	9
Submitted	1	
<b>UA College of Medicine - Phoenix</b>	<b>1</b>	
Submitted	1	Pending
<b>UA College of Pharmacy</b>	<b>3</b>	
Accepted	2	12
Submitted	1	
<b>Grand Total</b>	<b>61</b>	
<b>COM-T and UA CON= 0 applications &amp; budget pending</b>		
<b>UA COPH= 0 applications, projected 5</b>		

<b>Cohort 2021-23 Continuing Scholars</b>	
<b>Row Labels</b>	<b>Count of Participant: AHEC Scholars Status</b>
ASU College of Nursing and Health Innovation	15
NAU Department of Dental Hygiene	6
NAU Department of Physical Therapy and Athletic Traini	6
NAU Department of Physician Assistant Studies	25
NAU School of Nursing	7
UA College of Medicine - Phoenix	4
UA College of Medicine - Tucson	3
UA College of Nursing*	16
UA College of Pharmacy	11
UA College of Public Health	8
<b>Grand Total</b>	<b>102</b>
* Includes Undergrad Scholars	



THE UNIVERSITY OF ARIZONA  
**Arizona AHEC**  
Area Health Education Centers

# ENHANCEMENT OF THE AHEC SCHOLARS PROGRAM (ASP)

March 23, 2022

# AGENDA

## 2022-27 CHANGES IN AHEC SCHOLARS PROGRAM

- OVERVIEW
- HRSA WORKPLAN AND FOCUS
- SCHOLARS APPLICATION/ENROLLMENT
- SCHOLARS ACTIVITIES (SNAPSHOT)
- CENTER-BASED HEALTH PROFESSIONAL ACTIVITIES
- PROGRAM PARTNER ENGAGEMENT ROLES
- QUESTIONS

## OVERVIEW

In the 2022 Competing Continuation RFP, HRSA indicates the focus should be on CBET and AHEC Scholars.

Centers are best positioned to identify the most appropriate community immersion experiences for AHEC Scholars and beginning in 2022 are asked to enhance their role to:

- Incorporate health professionals who can guide scholars in the academic component of the Scholars program.
- lead community immersion experiences that incorporate these opportunities.

## HRSA WORKPLAN AND FOCUS

The 2021-22 HRSA workplan remains unchanged.

Beginning in fiscal year 2022-23, the HRSA workplan and related budget will be updated as part of the contracting process.

On the following page, highlights of the 2022-23 workplan are shown that will focus on HRSA-defined priorities.



BEGINNING 9/1/22 AND FOR FY 22-27,  
AZAHEC'S WORKPLAN WILL BE UPDATED WITH HRSA-DEFINED PRIORITIES

<p>1.1: AzAHEC recruits minimum of 3,000 unique health professions trainees (students and residents) for CBET in rural and MUCs over the five-year project <b><u>The number of CBETs required by HRSA will remain unchanged.</u></b></p>	<p>FY 2022 to FY 2027 Benchmarks: A minimum of 600 unique health professions trainees (i.e., students and residents) will have not less than 90,000 CBET hours of experiences per project year. Each HRSA-supported center will have a minimum of 120 trainees having a minimum of 18,000 CBET hours per year. Centers with a LIC program in conjunction with an RHPP may have less trainees but total CBET hours must be achieved</p>
<p>1.2. AzAHEC recruits minimum of 375 AHEC Scholars per Regional Center over the course of the five-year project <b><u>The number of scholars will remain unchanged</u></b></p>	<p>FY 2022 to FY 2027 Benchmarks: A minimum of 75 new scholars will be admitted into the program each year, reflecting 15 new scholars per approved center. A minimum of 75 scholars will return to the program each year, reflecting 15 returning scholars per center.</p>
<p>1.3. AzAHEC implements the HRSA Core Topics: IPE, behavioral health integration, SDOH, practice transformation &amp; cultural competence in clinical education, ASP &amp; CE activities; connecting communities and supporting health professionals, virtual learning &amp; telehealth. current, emerging health issues implemented when locally significant.</p>	<p>FY 2022 to FY 2027 Benchmarks All new and returning AHEC Scholars will have targeted training in core topics</p>
<p>2.1. AzAHEC recruits a minimum of 3,000 9-12<sup>th</sup> high school &amp; undergrad pre-health profession students to participate in structured activities (20 hrs) for the 5-year project. Improve URM recruitment <b><u>This is a 40% decrease in federal reporting for high school club participants and a 100% decrease in federal reporting for health career events that will begin 9/1/22.</u></b></p>	<p>FY 2022-FY 2027 Benchmarks: A minimum of 600 participants per project year, reflecting a minimum of 120 club participants per center per year.</p>
<p>3.1. AzAHEC recruits a minimum of 7,500 health care providers from safety net health service sites to participate in professional development training emphasizing HRSA core topics over the course of the five year project. <b><u>This is a 25% decrease in federal reporting for continuing education that will begin 9/1/22.</u></b></p>	<p>Benchmarks FY 2022-2027 A minimum of 1,500 participants per project year, reflecting a minimum of 300 participants per center per year.</p>

# RESULTS OF THE UPDATED WORKPLAN

BEGINNING 9/1/22, CENTERS  
WILL ALLOCATE LESS  
RESOURCES (PERSONNEL)  
TOWARD

↓  
CONTINUING  
EDUCATION

↓  
CLUBS AND  
OTHER  
ORGANIZED  
PIPELINE  
EVENTS

↓  
HEALTH  
CAREER  
EVENTS

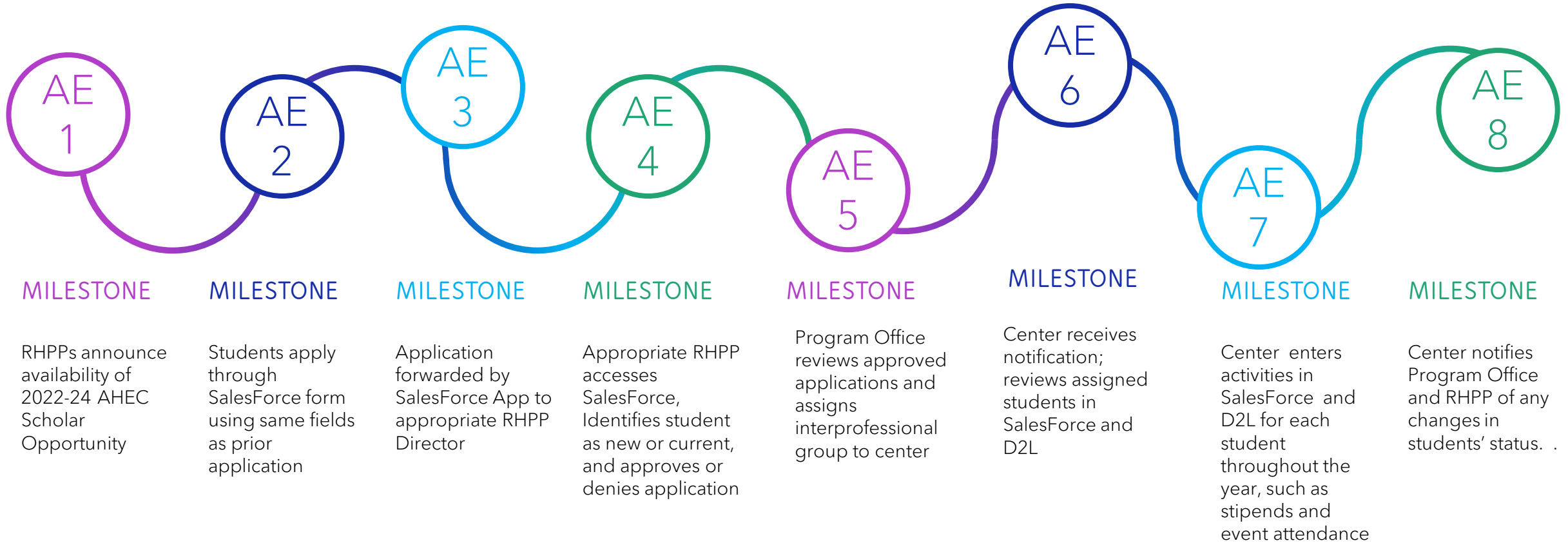
BEGINNING 9/1/22, CENTERS  
WILL ALLOCATE MORE  
RESOURCES (PERSONNEL)  
TOWARD

↓  
AHEC  
SCHOLARS  
PROGRAM

# AHEC SCHOLARS APPLICATION AND ENROLLMENT

The current AHEC Scholars recruitment, application and acceptance process for the Scholars remains with the RHPPs, although it will transition from Qualtrics to Salesforce. As highlighted on the next page, this enables centers to view the Scholars assigned to them as soon as Scholars' assignments to specific centers are completed, and to record interactions with the Scholars.

# AZAHEC SCHOLARS APPLICATION & ENROLLMENT (AE) ROADMAP BEGINNING WITH COHORT 2022-24



## AHEC SCHOLAR ACTIVITIES/SNAPSHOT

The current AHEC Scholars manual identifies the current AHEC Scholars process and these activities remain primarily unchanged. Each year of the Scholars' program must encompass 80 hours. To maximize results, some activities will be enhanced or more clearly defined. These enhancements are highlighted on the next page and will also be addressed in the revised AHEC Scholars manual.

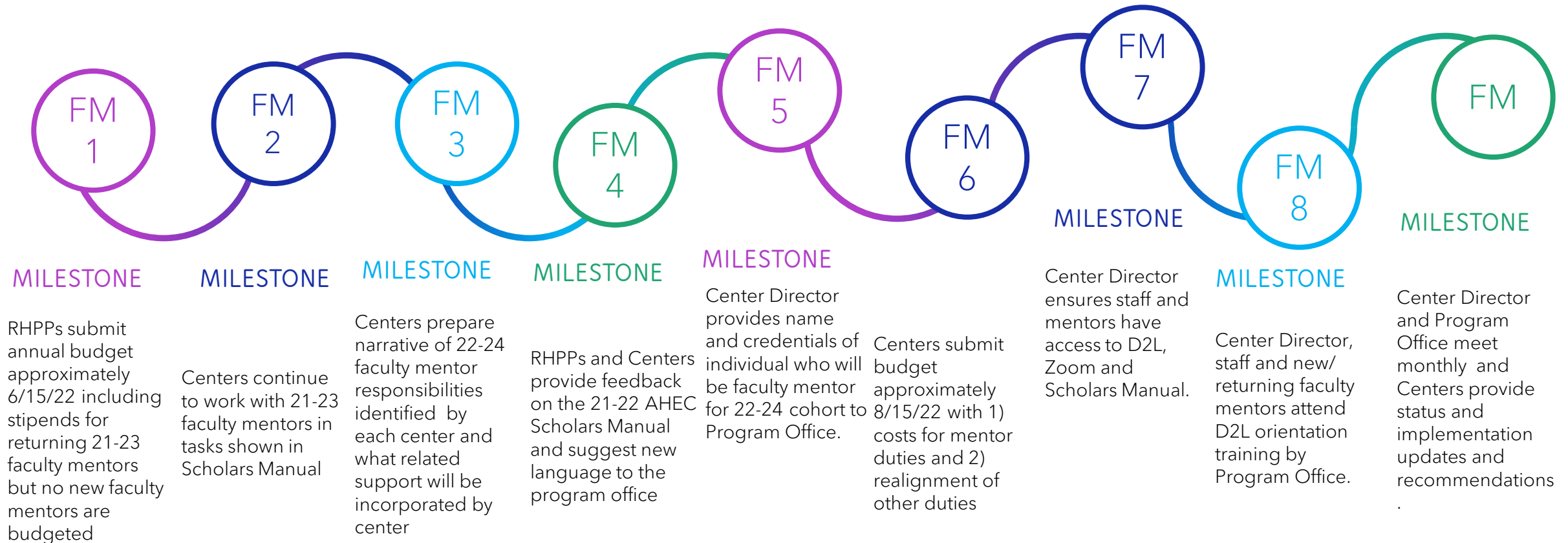
# AHEC SCHOLARS SNAPSHOT 2022-2027

INCOMING COHORT							
Fall Semester					Spring Semester		
September	October	November	December	January	February	March	April
AHEC Scholars Orientation 3.5 hours Community Immersion at sponsoring AHEC Center 16 hours Seminar 2 hours	Seminar 2 hours	Seminar 2 hours Community Assessment Paper Prep 2 hours	Seminar 2 hours Community Assessment Paper Prep 2 hours	Community Immersion at sponsoring AHEC Center 16 hours Community Assessment Paper Prep 2 hours	Seminar 2 hours Community Assessment Paper Prep 2.5 hours Poster Presentation Prep 4 hours	Seminar 2 hours Poster Presentation Prep 6 hours	Seminar 2 hours Poster Presentation and IPE RHPP Conference 12 hours
RETURNING COHORT							
Fall Semester					Spring Semester		
September	October	November	December	January	February	March	April
AHEC Scholars Orientation 3.5 hours Community Immersion at sponsoring AHEC Center 16 hours Seminar 2 hours	Seminar 2 hours	Seminar 2 hours Scholarly Project Prep 2 hours	Seminar 2 hours Scholarly Project Prep 2 hours	Community Immersion at sponsoring AHEC Center 16 hours Scholarly Project Prep 2 hours	Seminar 2 hours Scholarly Project Prep 2.5 hours Podium Presentation Prep 4 hours	Seminar 2 hours Podium Presentation Preparation 6 hours	Seminar 2 hours Podium Presentation and IPE RHPP Conference 12 hours

# ASP CENTER-BASED HEALTH PROFESSIONAL ACTIVITIES

The AHEC Scholars mentor recruitment was previously initiated by the RHPPs and then each mentor was assigned to a center. Beginning in 2022-23, centers will identify their region-specific health professional needs within the broader goals of the AHEC Scholars Program.

# AZAHEC MENTORS (FM) ROADMAP BEGINNING WITH COHORT 2022-24





## ASP EXPANSION NARRATIVE

By April 15<sup>TH</sup>, centers are asked to submit a narrative describing their region-specific health professional needs to meet the needs of the ASP inclusive of the sample activities described on the following slides. A more comprehensive list will be provided when this PPT is distributed.

# EXPANSION & REALLOCATION(ER) ROADMAP

Center expanded role beginning 2022 with \$15,000 additional budget\*

Center Reallocation of HRSA priorities



## MILESTONE

Health professional with academic/research experience to guide scholars in paper, poster and podium presentations

## MILESTONE

Regional expert develops and conducts immersion experiences

## MILESTONE

Health professional with academic/research experience to facilitate monthly seminars.

## MILESTONE

Health professional develops minimum of one monthly presentations annually for viewing by all scholars.

## MILESTONE

Administration of scholar status including: activities, attendance, accommodations, program change, stipends in Salesforce and D2L.

## MILESTONE

Center Director management of entire process, including overseeing activities, narrative reporting, attendance at monthly meetings

\*\$15,000 each time these activities are assumed for one group of scholars. In second and subsequent years, this would result in an additional \$30,000 for two health professionals.

# AHEC SCHOLAR CENTER ENHANCEMENT (E) ROADMAP

## Example 1

E1

### MILESTONE

ASSIGNMENT INCLUDES MENTORSHIP ON POSTERS, PODIUM, AND PAPERS.

E1

### MILESTONE

ASSIGNMENT INCLUDES ONE RECORDED PRESENTATION PER YEAR AVAILABLE TO ALL CENTERS

E1

### MILESTONE

ASSIGNMENT INCLUDES MODERATING MONTHLY SEMINAR PRESENTATIONS

E1

### MILESTONE

ASSIGNMENT INCLUDES LEADING TWO IMMERSIONS PER YEAR PER GROUP

## Example 2

E2

### MILESTONE

ASSIGNMENT INCLUDES MENTORSHIP ON POSTERS, PODIUM AND PAPERS

E2

### MILESTONE

ASSIGNMENT INCLUDES ONE RECORDED PRESENTATION PER YEAR AVAILABLE TO ALL CENTERS

E2

### MILESTONE

ASSIGNMENT INCLUDES MODERATING MONTHLY SEMINAR PRESENTATIONS.

E2

### MILESTONE

*Duties performed by other center staff includes leading two immersions per year per group.*

## Example 3

E3

### MILESTONE

ASSIGNMENT INCLUDES MENTORSHIP ON POSTERS, PODIUM AND PAPERS

E3

### MILESTONE

ASSIGNMENTS INCLUDES ONE RECORDED PRESENTATION PER YEAR AVAILABLE TO ALL CENTERS

E3

### MILESTONE

*Duties performed by other center staff includes moderating monthly seminar presentations.*

E3

### MILESTONE

*Duties performed by other center staff includes leading two immersions per year per group.*

## 2022-27 ASP CENTER NARRATIVE PLAN

Centers are asked to submit a narrative describing how duties related to the Scholars program will be assigned with their center. The following are example tasks that need to be assigned.

Centers will identify individual(s) to perform the following duties by an existing staff member and/or a new hire qualified to lead/facilitate health professional students.

\_\_\_\_\_*J o b T i t l e*\_\_\_\_\_will lead two hour monthly seminar on one or more HRSA Core Topics.

\_\_\_\_\_*J o b T i t l e*\_\_\_\_\_will plan two community immersions annually within a rural and underserved community in the assigned center region.

\_\_\_\_\_*J o b T i t l e*\_\_\_\_\_will provide one annual monthly seminar on one or more HRSA Core Topics to be shared between all regions.

\_\_\_\_\_*J o b T i t l e*\_\_\_\_\_will provide guidance on poster and podium presentation for assigned scholar group.

# AHEC SCHOLAR PROGRAM PARTNER ENGAGEMENT ROADMAP

## RHPPS

PE  
1

### MILESTONE

ESTABLISHES RETURNING MENTOR IN 2022-23 BUDGET

PE  
1

### MILESTONE

ANNOUCE AND RECRUIT FOR POTENTIAL SCHOLARS WITHIN THEIR RHPP.

PE  
1

### MILESTONE

REVIEWS & APPROVES SCHOLAR APPLICATION IN SALESFORCE.

PE  
1

### MILESTONE

ATTEND RECURRING MEETINGS FOR PROGRAM OFFICE.

## CENTERS

PE  
2

### MILESTONE

IDENTIFIES DUTIES THAT WILL BE PERFORMED BY JOB TITLE, INCLUDING NEW HIRES OR REDEPLOYMENT.

PE  
2

### MILESTONE

CENTER DIRECTOR PROVIDES CENTER OVERSIGHT, GUIDANCE AND ATTENDS MONTHLY MEETINGS.

PE  
2

### MILESTONE

CENTER PLANS & IMPLEMENTS COMMUNITY IMMERSIONS TWICE A YEAR.

PE  
2

### MILESTONE

MAY IDENTIFY POTENTIAL NEW SCHOLARS. PRIOR APPROVAL REQUIRED FROM PROGRAM OFFICE AND HRSA. ALL APPROVED SCHOLARS MUST APPLY THROUGH STANDARD APPLICATION.

## PROGRAM OFFICE

PE  
3

### MILESTONE

ESTABLISHES SCHOLARS BY REGION IN SALESFORCE

PE  
3

### MILESTONE

ESTABLISHES PROGRAMS IN D2L AND SALESFORCE; TRAINS CENTERS USAGE FOR SCHOLARS PROGRAM

PE  
3

### MILESTONE

HOST RECURRING CHECK-IN MEETINGS WITH PARTNERS (I.E., CENTERS, RHPPS, PROGRAM OFFICE).

PE  
3

### MILESTONE

SUBMIT PROGRESS (NARRATIVE) AND PERFORMANCE (DATA) REPORTS TO HRSA AND STATE OF ARIZONA

# NEXT STEPS

Center Reviews:

2021-22 AHEC Scholars Manual

Today's PowerPoint

- ASP Snapshot
- Sample Narrative
- Sample Enhancements

Center evaluates how enhanced ASP tasks & responsibilities are best incorporated in their region.

Center completes narrative using templated by 4/15/22. identifying which duties will be assigned to new or existing qualified personnel.

Center participates in regular transition planning meetings.



QUESTIONS



MEETING: RHPP Directors, Regional Center Directors  
 DATE: September 21, 2022  
 TIME: 12:00-1:01 pm  
 PLACE: AHEC Zoom Meeting  
 HOST: Leila Barraza  
 RHPP Director Attendees: Shelley Vaughn, Marc Verhougstraete, Andrea Trujillo, Bettie Coplan, Jonathan Cartsonis, Christy Pacheco, Elizabeth Hall-Lipsy, Diane Nunez  
 Center Director Attendees: Felipe Perez, Joena Ezroj, Marica Martinic, Jean Campbell, Ana Roscetti  
 Other Attendees: Colleen Reed, Sonia Cota-Robles, Jennifer Zuniga, Amanda Perkins, Marni Valenzuela, Jeff Axtell, Kim Russell, Jessica Alcaraz, Loren Halili, Kristen Natonie, Edgardo Figueroa, Courtney Madsen, Yolanda Perez, Becca Harris

ITEM	ANNOUNCEMENT/DISCUSSION	Information provided by:
<b>Meeting</b>	Welcome	Leila Barraza
<b>Discussion</b>	<p>Center for Rural Health AHEAD grant is offering collaborations for K-8 clubs. This program offers opportunities that include partnering to engage youth through training and education, hands-on community-based projects, and through curriculum. Possible engagements may include embedding training modules into exiting summer youth programs, clubs, or coalitions, offer hands-on activities aimed to promote and empower youth to participate, and possibly a two-week standalone summer program. Training topics include building community resilience, youth advocacy, substance use &amp; mental health, and the public health system in AZ. If these activities are funded by AHEAD, the activities would not be reportable to AHEC. For further information, contact Loren Halili, Program Coordinator AZ CRH, AHEAD AZ, <a href="mailto:LorenHalili@arizona.edu">LorenHalili@arizona.edu</a>.</p> <p>CPCHP- ASP immersion for YR1 was held in Show Low and included Q &amp; A sessions with community members from White Apache Mountain Tribe Healthcare, Show Low council member, and an area case manager. Participants also conducted a windshield survey of the area. YR2 scholars met in Flagstaff and researched transportation for the largest hospital and the hospitals move to a new area, they also met with mentors.</p> <p>WAHEC- ASP Immersions were held in person which included both YR1 and some in-person YR2 participants. Scholars visited the Cocopah Tribal communities.</p> <p>CAAHEC- ASP Immersions were combined and held in person, though YR2 had a mixture of virtual and in person participants. The immersion was held in Prescott and included a presentation from Yavapai Community Health Center discussing barriers to accessing healthcare in the county. Scholars also participated in a guided windshield survey of Prescott areas, along with teambuilding activities, a community stakeholder panel, and a module on Social Determinants of Health. YR2 scholars also worked on their substance abuse research project.</p> <p>SAAHEC- ASP Immersions included presentations from Cochise County Health &amp; Social Services, Cochise County Superintendent, and Mariposa Health. Participants also completed a windshield survey focusing on both positive aspects of the community as well as negatives and then discussed project focus and overall expectations for the program. YR2 cohort attended mostly virtually and shared their experiences with YR1 scholars.</p> <p>EAHEC- immersion was held in the Payson and Tonto Basin communities. In Payson, scholars participated tours of clinics, hospitals, and student housing to understand the type of healthcare in Payson. Scholars also participated in discussions about medical and clinical rotations with an LIC student and PA student from the community. In Tonto Basin, scholars were introduced to telemed equipment and discussed what impact it could have for patients in the surrounding areas. They travelled with a disaster relief</p>	<p>Loren Halili</p> <p>Courtney Madsen</p> <p>Joena Ezroj</p> <p>Ana Roscetti</p> <p>Felipe Perez</p> <p>Jean Campbell</p>





	<p>media specialist who took them on a tour of the basin, creeks, ranches, and showed them how communities are developed around the highway and by those who are cut-off from access on the other side of the creek.</p> <p>Since 2018, 231 ASP participants have completed or are currently enrolled in the ASP from disciplines including: Medicine, Nurse Practitioner, Pharmacy, Physician Assistant, Public Health, Physical Therapy, Registered Nurse, and Dental Hygiene; this does not include the 81 students who joined this year.</p> <p>Topics of discussion/consideration related to AHEC Scholars:</p> <ol style="list-style-type: none"><li>1. Should we recruit students that live out of state? How would they travel to immersions at their own expense? How to incorporate those students.<ol style="list-style-type: none"><li>a. Colleges would be the entity approving and reimbursing this travel and may have travel limitations.</li></ol></li><li>2. Should dates of the fall immersion be changed to later in September or October? If yes, how will this impact overall hours and time commitment?<ol style="list-style-type: none"><li>a. Hours will need to be made up.</li><li>b. Students' coursework may begin to interfere with how much they can participate in immersion.</li><li>c. Immersion dates will continue to be identified through polls distributed to RHPPs and Centers.</li></ol></li><li>3. Should there be a grading system within the RHPPs for the participants?<ol style="list-style-type: none"><li>a. General consensus was no grades or Pass/Fail.</li></ol></li></ol> <p>SalesForce dashboards are being updated for the 2022-23 year. The RHPP dashboards are being updated to include metrics reflected in award letters. SalesForce is being enhanced to improve the rotation association process. RHPP and Centers will be notified as the project continues to develop.</p>	<p>Jennifer Zuniga</p> <p>Leila Barraza Everyone</p> <p>Marni Valenzuela</p>
--	---	--



MEETING: RHPP Directors, Regional Center Directors  
 DATE: October 19, 2022  
 TIME: 12:01-12:28pm  
 PLACE: AHEC Zoom Meeting  
 HOST: Leila Barraza  
 RHPP Director Attendees: Diane Nunez, Christy Pacheco, Bettie Coplan, Andrea Lerner, Shelley Vaughn, Marc Verhougstraete  
 Center Director Attendees: Jeff Axtell, Felipe Perez, Ana Roscetti, Joena Ezroj  
 Other Attendees: Colleen Reed, Sonia Cota-Robles, Jennifer Zuniga, Marni Valenzuela, Nicole Paredes, Debra Ilchak, Courtney Madsen, Edgardo Figuero, Becca Harris, Mallika Peddada

ITEM	ANNOUNCEMENT/DISCUSSION	Information provided by:
<b>Meeting</b>	Welcome	Leila Barraza
<b>Discussion</b>	<p>Jeff Axtell is the new AIH AHEC Center Director</p> <p>Discussion of challenges to survey participation in pipeline programs.</p> <p>ASP immersion survey results. Received 86 surveys from 168 AHEC Scholars with 83% reporting they attended the immersion.</p> <p>Program Office is offering a funding opportunity for one center to take the program lead for Future Health Leaders. Additional information will be sent to centers soon.</p> <p>Centers should submit their housing report as part of their fourth quarter annual report. These reports help us with gathering information for HRSA &amp; State required reporting.</p> <p>Centers and RHPPs should ensure their faculty mentors' presentation is submitted by 10/31.</p>	<p>Leila Barraza</p> <p>Leila Barraza Ana Roscetti</p> <p>Sonia Cota-Robles</p> <p>Leila Barraza</p> <p>Leila Barraza Jennifer Zuniga</p> <p>Leila Barraza</p>
<b>Adjournment</b> 12:28pm		



MEETING: RHPP Directors, Regional Center Directors  
 DATE: November 16, 2022  
 TIME: 12:01- 12:28pm  
 PLACE: AHEC Zoom Meeting  
 HOST: Leila Barraza  
 RHPP Director Attendees: Andrea Lerner, Bettie Coplan, Diane Nunez, Elizabeth Hall-Lipsy, Anna Landau, Shelley Vaughn  
 Center Director Attendees: Jeff Axtell, Felipe Perez, Joena Ezroj, Marica Martinic  
 Other Attendees: Colleen Reed, Sonia Cota-Robles, Jennifer Zuniga, Nicole Paredes, Edgardo Figueroa, Amanda Perkins, Becca Harris, Cheryl O'Malley, Michelle Huddleston, Courtney Madsen, Kristen Natonie, Lourdes Montez, Mallika Peddada, Yolanda Perez

ITEM	ANNOUNCEMENT/DISCUSSION	Information provided by:
<b>Meeting</b>	Welcome	Leila Barraza
<b>Discussion</b>	<p>College of Medicine – Phoenix, Graduate Medicine Residency Program has many residents (General Surgery, Family Medicine, Med Peds) rotating throughout state and outside of AZ. Currently seeking opportunities to grow new rotations for residents in rural areas and seeking to understand what resources are available in these areas; especially housing.</p> <ul style="list-style-type: none"> <li>- AHEC Centers may be a resource for housing if they have available, e.g. CPCHP, WAHEC have housing units.</li> <li>- Most RHPP Directors work with AirBNB, VRBO, and institutions typically have housing contacts that they've used previously.</li> <li>- Center budgets do support using additional housing money, for those Centers that requested, for UA, ASU or NAU students.</li> </ul> <p>EAHEC has chosen to resign as an AHEC Regional Center. We are waiting for additional information from EAHEC to determine a final end date. Plan is for an RFP to be released for bids for a new organization/entity to represent this region. We thank EAHEC for their work over the years and in helping to make this a smooth transition.</p> <p>EAHEC AHEC Scholars are continuing under Judith Hunt, Faculty Mentor, and CPCHP has released stipends to the students. EAHEC region has largely been supported by housing within Payson which is provided by a foundation; currently working with CPCHP to develop a short term plan to continue offering housing in the area until a new entity is identified.</p> <p>RHPP Directors should notify Jennifer Zuniga of any students within the EAHEC region that will need support.</p> <p>Next meeting December 14, 2022.</p>	<p>Cheryl O'Malley &amp; Michelle Huddleston</p> <p>Marica Martinic, Joena Ezroj, Elizabeth Hall-Lipsy, Amanda Perkins</p> <p>Leila Barraza</p> <p>Jennifer Zuniga</p>
<b>Adjournment</b> 12:28 pm		



MEETING: RHPP Directors, Regional Center Directors  
 DATE: December 14, 2022  
 TIME: 12:01- 12:51 pm  
 PLACE: AHEC Zoom Meeting  
 HOST: Leila Barraza  
 RHPP Director Attendees: Shelley Vaughn, Andrea Trujillo, Bettie Coplan, Debra Ilchak, Jonathan Cartsonis  
 Center Director Attendees: Jeff Axtell, Joena Ezroj, Marica Martinic  
 Other Attendees: Colleen Reed, Sonia Cota-Robles, Jennifer Zuniga, Nicole Paredes, Edgardo Figueroa, Amanda Perkins, Marni Valenzuela, Becca Harris, Yolanda Perez, Lourdes Montez, Courtney Madsen, Mallika Peddada

ITEM	ANNOUNCEMENT/DISCUSSION	Information provided by:
<b>Meeting</b>	Welcome	Leila Barraza
<b>Discussion</b>	<p>EAHEC Regional Center has resigned effective December 16<sup>th</sup>. CPCHP (Payson area) and CAAHEC (outside of Payson) are assisting serving students who are in the region. Please notify the Program Office if you know of students who need assistance in the area.</p> <p>AHEC Scholars Immersions are planned for January 28-29, 2023.</p> <ul style="list-style-type: none"> <li>• SAAHEC plans <i>Working in Interprofessional Settings</i> theme and having presentations around these spaces. YR1 and YR2 will work together on projects with possibility of undergraduates working with them as well.</li> <li>• CPCHP plans both virtual and in-person immersion. Both YR2 cohorts will be working on their projects on Sunday and will be in the Flagstaff area. YR1 will be in Show Low doing community experience and an immersive volunteer experience.</li> <li>• WAHEC is planning for in-person immersion working on projects surrounding mental health access and resources for pediatrics to include community outreach and systemic change within their own clinics to provide outreach and education for children.</li> <li>• CAAHEC YR2 scholars are planning to work with adolescents and their projects for the conference. YR1 is working on topics to work within the Prescott community on Saturday and then work on their projects as well.</li> </ul> <p>Currently preparing HRSA quarterly narrative report, focusing on continuing education partners, clubs, and RHP programs. This is a new reporting requirement and one that requires timely reporting by Centers and RHPPs.</p> <p>The AzaHEC program office is preparing to complete a mid-year assessment. The program office requests the following assistance from:</p> <ul style="list-style-type: none"> <li>• Regional Centers – Should input all completed experiences/events as of 12/31/22 into the Salesforce database by 1/11/23. The Salesforce database will be closed for Regional Center users on 1/12/23 and 1/13/23.</li> <li>• RHPP Programs- Should review all projected rotations with an end date prior to November 30, 2022 and either delete or update accordingly. Any</li> </ul>	<p>Leila Barraza Jennifer Zuniga</p> <p>Yolanda Perez</p> <p>Courtney Madsen</p> <p>Joena Ezroj</p> <p>Mallika Peddada</p> <p>Jennifer Zuniga</p> <p>Marni Valenzuela</p>



	<p>outstanding projected rotations will be deleted during the mid-year review. RHPP users will continue to have access to Salesforce during the closure for centers.</p> <p>The 11<sup>th</sup> Annual Interprofessional RHPP Conference will be held virtually on Friday afternoon, April 14<sup>th</sup> and Saturday, April 15<sup>th</sup>, 2023. The first planning meeting will be held January 10<sup>th</sup>. For those who cannot attend the meeting, but still wish to contribute, please submit suggestions utilizing the <a href="#">Feedback Form</a> before the meeting. Visit the <a href="#">shared folder</a> for the activities and key dates calendar (includes all upcoming planning meetings with zoom links), previous meeting highlights, and other conference planning materials.</p> <p>As a reminder, University of Arizona closure December 23 – January 2.</p>	Marni Valenzuela
<b>Adjournment 12:51 pm</b>		



MEETING: RHPP Directors, Regional Center Directors  
 DATE: January 18, 2023  
 TIME: 12:03 – 1:02pm  
 PLACE: AHEC Zoom Meeting  
 HOST: Leila Barraza  
 RHPP Director Attendees: Elizabeth Hall-Lipsy, Shelley Vaughn, Bettie Coplan, Jonathan Cartsonis, Christy Pacheco, Marc Verhougstraete  
 Center Director Attendees: Felipe Perez, Jeff Axtell, Ana Roscetti, Joena Ezroj  
 Other Attendees: Colleen Reed, Sonia Cota-Robles, Jennifer Zuniga, Nicole Paredes, Edgardo Figueroa, Amanda Perkins, Marni Valenzuela, Yolanda Perez, Courtney Madsen, Debra Ilchak, Katie Herder, Becca Harris

ITEM	ANNOUNCEMENT/DISCUSSION	Information provided by:
<b>Meeting</b>	Welcome	Leila Barraza
<b>Discussion</b>	<p>University of Arizona Comprehensive Pain and Addiction Center is trying to assess opportunities and barriers regarding implementation of screeners and primary care. With the help of center and RHPP directors, the Center would like to collect data through interviews and distribute surveys to primary care providers. If Centers or RHPPs are able to assist or have contacts that can assist with distributing surveys please complete Google Doc  <a href="https://docs.google.com/spreadsheets/d/1f98ohiY0CYWY1AEiXUddVxD1ykZgngk_3MIHboYjBA/edit#gid=0">https://docs.google.com/spreadsheets/d/1f98ohiY0CYWY1AEiXUddVxD1ykZgngk_3MIHboYjBA/edit#gid=0</a></p> <p>NAO published their 21-22 AHEC Data report. AZ AHEC has reported 11.8% of clinical rotations and 2% of AHEC Scholars towards the total national average.</p> <p>Mid-Year Assessment underway by Program Office; Salesforce database re-opened on Monday, January 16. Mid-Year reports will be distributed to the Centers soon.</p> <p>RHPP improved dashboards will go live January 30<sup>th</sup> and will include metrics and gauges that highlight achievement towards goals indicated in Award Letters. New Salesforce URLs will be sent to RHPP directors on January 30<sup>th</sup>.</p> <p>RHPP Conference development continues. Notes from January meeting have been distributed and are available in box. Conference will be offered by zoom for maximum attendance. RHPPs or Centers may offer satellite locations for small group meetings. Centers and/or RHPPs should complete Qualtrics survey to indicate if <u>they will or will not offer</u> an optional in-person satellite program. Hosting satellite locations should distribute invitations directly to attendees and report on specifics of attendees, including their names and disciplines. Student travel transportation for in-person attendance should be handled by the RHPP directors to meet each university's and department's specific travel requirements.</p> <p>Discussion about AHEC Scholars travelling to communities to complete additional ASP community assessments occurred. Centers are finding it beneficial that scholars can travel and do further assessments and observations. Any student planning to travel additional times, outside of immersion schedule, should notify their RHPP director for approval and then their Center. RHPP Directors may reach out to Amanda Perkins if the budget needs additional consideration.</p>	<p>Katie Herder</p> <p>Jennifer Zuniga</p> <p>Jennifer Zuniga</p> <p>Marni Valenzuela</p> <p>Leila Barraza Jennifer Zuniga Marni Valenzuela Amanda Perkins</p> <p>All</p>
<b>Adjournment</b> 1:02pm		



MEETING: RHPP Directors, Regional Center Directors  
 DATE: February 15, 2023  
 TIME: 12:01- 12:52pm  
 PLACE: AHEC Zoom Meeting  
 HOST: Leila Barraza  
 RHPP Director Attendees: Andrea Trujillo, Elizabeth Hall-Lipsy, Diane Nunez, Ana Roscetti, Marc Verhougstraete, Christy Pacheco, Anna Landau, Shelley Vaughn, Jonathan Cartsonis, Bettie Coplan  
 Center Director Attendees: Jeff Axtell, Ana Roscetti, Felipe Perez, Joena Ezroj  
 Other Attendees: Colleen Reed, Sonia Cota-Robles, Jennifer Zuniga, Nicole Paredes, Edgardo Figueroa, Amanda Perkins, Marni Valenzuela, Becca Harris, Yolanda Perez, Courtney Madsen, Nancy Johnson, Jake Schwarz, Gustavo Alvarez, Lourdes Montez

ITEM	ANNOUNCEMENT/DISCUSSION	Information provided by:
<b>Meeting</b>	Welcome	Leila Barraza
<b>Discussion</b>	Discussion occurred about AHEC Scholars travelling for immersions and optional trip opportunities offered by Centers. No resolution was reached. Further discussion is needed and, once a consensus is reached, it will be incorporated into the 2023-24 AHJEC Scholars Manual.	
<b>Adjournment 12:52pm</b>		







MEETING: RHPP Directors, Regional Center Directors  
 DATE: April 19, 2023  
 TIME: 12:00-12:47pm  
 PLACE: AHEC Zoom Meeting  
 HOST: Leila Barraza  
 RHPP Director Attendees: Shelley Vaughn, Diane Nunez, Andrea Trujillo Lerner, Marc Verhougstraete, Bettie Coplan  
 Center Director Attendees: Jeff Axtell, Felipe Perez, Joena Ezroj, Marica Martinic,  
 Other Attendees: Jennifer Zuniga, Amanda Perkins, Colleen Reed, Marni Rawiszer, Sonia Cota-Robles, Becca Harris, Megan Lopez, Edgardo Figueroa, Courtney Madsen, Yolanda Perez, Miriam Espinoza, Debra Ilchak

ITEM	ANNOUNCEMENT/DISCUSSION	Information provided by:
<b>Meeting 12:00pm</b>	Welcome	Leila Barraza
<b>Discussion</b>	<p>RHPP Conference attendance was 255 with RHPP Students who are AHEC Scholars representing largest group at 61% and RHPP students who are not AHEC Scholars representing 13%. Survey responses are being analyzed. It was suggested to hold a zoom webinar training session the month prior to the conference during the monthly scholar seminar so that scholars can familiarize themselves with how being a panelist during a conference works. Next year's RHPP Conference will be held April 12-13, 2024, virtually.</p> <p>RHPP Proposals to be distributed approximately June 1.</p> <p>AHEC Scholars Program</p> <ol style="list-style-type: none"> <li>AIH-AHEC will begin recruiting undergraduate NAU public health and nursing students to be part of the AHEC Scholars program moving forward; priority will be given to indigenous students. This is the only center accepting undergraduate applications at this time. AIH-AHEC will also accept graduate students from the RHPP programs with priority given to indigenous students.</li> <li>There are new RHPP programs in the pipeline at the UA that will allow for additional scholars in future years.</li> <li>ASP 2023-24 Immersion Dates           <ul style="list-style-type: none"> <li>Program orientation: October 7, 2023 – virtual ~ 3 hours in the morning</li> <li>Community Immersion: October 7-8, 2023 – in person</li> <li>Center dates for 2<sup>nd</sup> weekend for <b>Year 2 scholars only</b> – Fall - weekend of September 23; and Spring - weekend of January 20.</li> <li>Centers requesting 2<sup>nd</sup> weekend must notify Program Office and allow other options for Year 2 scholars who cannot attend.</li> </ul> </li> <li>Application link is now open and RHPPs have been advised. Deadline for next cohort September 24, 2023.</li> <li>RHPPs who have Scholars who will not complete the ASP at the same time of graduation are asked to notify the Program Office.</li> </ol>	<p>Leila Barraza Marni Valenzuela</p> <p>Leila Barraza</p> <p>Jeff Axtell</p> <p>Leila Barraza</p> <p>Leila Barraza</p> <p>Jennifer Zuniga</p>



	<p>Year-end HRSA performance report due July 31. All programs (RHPP and Centers) have been advised through email of dates Salesforce will close for entries. Another email reminder with activities achieved toward award will be distributed this week. All program directors (RHPP and Centers) should monitor their Salesforce dashboards to confirm program activities are recorded. Sub-awards for Centers and RHPPs for 2023-24 will be based on 2022-23 activities.</p>	Leila Barraza
<b>Ended 12:47pm</b>		



MEETING: RHPP Directors, Regional Center Directors  
 DATE: May 17, 2023  
 TIME: 12:01- 1:02pm  
 PLACE: AHEC Zoom Meeting  
 HOST: Leila Barraza  
 RHPP Director Attendees: Shelley Vaughn, Diane Nunez, Andrea Trujillo Lerner, Marc Verhougstraete, Bettie Coplan, Christy Pacheco, Anna Landau  
 Center Director Attendees: Jeff Axtell, Marica Martinic, Ana Roscetti, Joena Ezroj  
 Other Attendees: Jennifer Zuniga, Amanda Perkins, Colleen Reed, Nicole Paredes, Edgardo Figueroa, Sonia Cota-Robles, Courtney Madsen, Karen Tenace, Yolanda Perez, Becca Harris

ITEM	ANNOUNCEMENT/DISCUSSION	Information provided by:
Meeting 12:01 pm	Welcome	Leila Barraza
Discussion	<p>AHEC Scholars Program power point presentation was shared. Each RHPP Program Director received an email subsequent to the meeting describing specific confirmations needed and requesting input. A template of that email is attached for reference. Center directors were also asked via email to provide input. Qualtrics link for feedback and survey is at:  <a href="https://uarizona.col.qualtrics.com/jfe/form/SV_6muSozRXfIj8R7M">https://uarizona.col.qualtrics.com/jfe/form/SV_6muSozRXfIj8R7M</a> and due not later than 5/25/23 at 5 pm.</p> <p>AHEC Scholars Discussion</p> <ol style="list-style-type: none"> <li>1) Immersion dates           <ol style="list-style-type: none"> <li>a) Attendance needs to be emphasized.</li> <li>b) Provide dates in advance and on one weekend.</li> <li>c) Provide immersion locations in advance for planning purposes and travel authorizations.</li> </ol> </li> <li>2) Alternative assignments or options to make-up hours.</li> <li>3) Travel time to immersions vs where they are currently placed, house, etc.</li> <li>4) Some programs have had success with recruitment and retention efforts by offering course credit/hours for scholar activities like immersions.</li> </ol>	Jennifer Zuniga  All
Ended 1:02pm		



MEETING: RHPP Directors, Regional Center Directors  
 DATE: June 21, 2023  
 TIME: 12:01- 12:27pm  
 PLACE: AHEC Zoom Meeting  
 HOST: Jennifer Zuniga  
 RHPP Director Attendees: Shelley Vaughn, Diane Nunez, Andrea Trujillo Lerner, Marc Verhougstraete, Bettie Coplan, Christy Pacheco, Anna Landau, Elizabeth Hall-Lipsy, Debra Ilchak, Johnathan Cartsonis  
 Center Director Attendees: Jeff Axtell  
 Other Attendees: Jennifer Zuniga, Amanda Perkins, Nicole Paredes, Sonia Cota-Robles, Marni Valenzuela, Courtney Madsen, Becca Harris, Yolanda Perez, Justin Scott, Miriam Espinoza

ITEM	ANNOUNCEMENT/DISCUSSION	Information provided by:
<b>Meeting 12:01 pm</b>	Welcome	Jennifer Zuniga
<b>Discussion</b>	<p>FY 2024 RHPP Call for Proposals were distributed to all RHPP directors via email on 6/2/23. Budgets will be based on 22/23 performance. Proposals will be reviewed in the order that they are received. Regional Center contracts begin September 1. Center directors should anticipate the call for proposal to be released in August.</p> <p>AzAHEC’s Q3 narrative report was submitted to HRSA this week. Over 3,050 field experiences from 1,600 unique students have been entered into Salesforce by RHPPs and Centers for FY 22/23. The Salesforce database has been closed to accommodate program office preparations for the submission of the HRSA annual performance report in July. Centers and RHPPs will be notified when Salesforce reopens for FY 23/24 entries.</p> <p>AHEC Scholars Program (ASP):</p> <ol style="list-style-type: none"> <li>1. HRSA requirements dictate students should be simultaneously completing the program and graduating from their degree program. AzAHEC submitted a waiver to HRSA requesting leniency and is waiting to hear a response. HRSA’s decision will impact the recruitment of the incoming cohort. Additional requirements will continue to include the completion of at least one field experience during program duration.</li> <li>2. We are currently in recruitment for ASP cohort 23-25. See attachment for the current number of applications received by RHPP. Overall numbers are down from last year’s recruiting cycle. Several RHPP directors shared the expectation for the number of applications to increase starting in August when students return to Campus. The Program Office will provide an update of applications at the next RHPP/Center meeting.</li> </ol> <p>The program office is currently analyzing results from the recently graduated 21-23 ASP cohort evaluation surveys. Overall, the scholars found the program meaningful. Meeting participants indicated a preference for receiving the full evaluation prior to discussion at the next RHPP/Center meeting.</p>	<p>Amanda Perkins</p> <p>Jennifer Zuniga</p> <p>Sonia Cota-Robles</p>



	Associated rotations (i.e., field experiences that are initiated by a RHPP which a regional center supports) are being enhanced in Salesforce. Centers and RHPPs have been invited via email to attend informational meetings on either June 22 <sup>nd</sup> and June 23 <sup>rd</sup> .	Marni Valenzuela
<b>Ended 12:27pm</b>		